



B20S-7 / B25S-7 / B30S-7 / B32S-7

7-SERIES FORKLIFTS

Electric 2.0 to 3.2 ton capacity 4 wheel



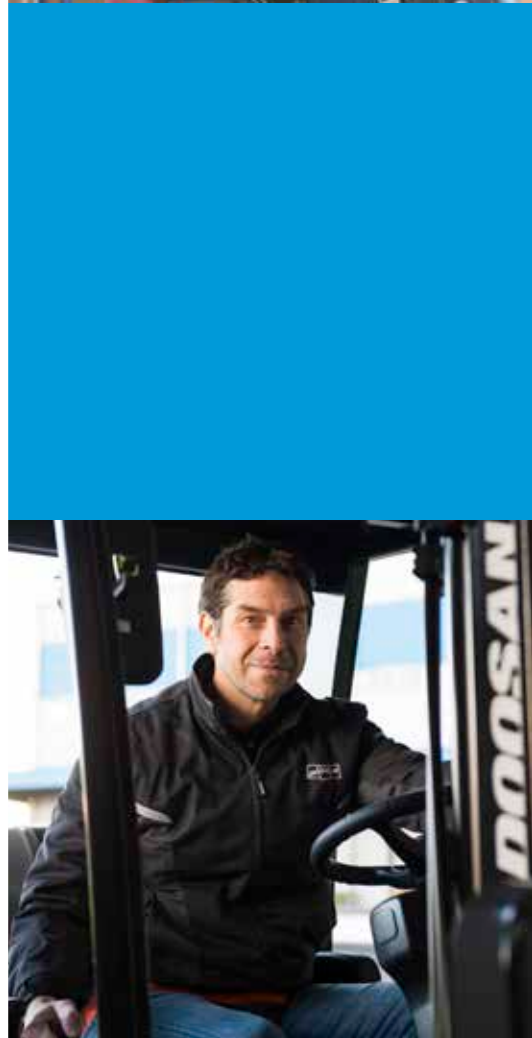
Leading the way

The new world class 7-Series trucks from Doosan continue to follow the core Doosan tradition of delivering simple, powerful performance, whilst most of all, delivering the best possible value for our customers.

“
Higher lifting and travel speed
enables me to reach optimal
efficiency in my job
”

PRODUCTIVITY

- Excellent visibility
- Smooth driving
- Direction switch on lift lever



The specially designed ergonomic operator compartment keeps the operator in complete control at all times, improving productivity and reducing stress and fatigue.

The 7-Series offers improved visibility and the latest design in ergonomic hydraulic controls. Thanks to an improved durable design and an additional stability system, Doosan's new 7-Series electric trucks exceed the highest demands for a safe operation.

Extended maintenance intervals and advanced technology components reduce the overall maintenance cost of maintenance. The newest in AC control systems provide an unbeatable combination of power, performance and reliability. Each parameter is fully adjustable to match every individual requirement perfectly, providing maximum control and accuracy for every application.



“
The robustness of the
Doosan truck ensures that even
the toughest of jobs gets done
”

RELIABILITY

- Durable transaxle
- Durable Oil cooled disk brake
- Water and dust proof for outdoor use



“
The Doosan service support
network has never let me down
”

SERVICEABILITY

- Doosan service network coverage
- Quick service response
- Easy to fix design

“
With the reassuring features
of a Doosan truck, operation is
safe and comfortable
”

SAFETY AND ERGONOMICS

- Large panoramic mirror
- Guardian Stability System (GSS)
- Adjustable steering column
- Compact steering wheel



Features overview

The Doosan 4-wheel electric counterbalance forklift trucks provide great power, excellent performance, enhanced safety, driving comfort, outstanding serviceability and reliability.

MAXIMUM PRODUCTIVITY

Reliable AC controller

Excellent visibility

Smooth and responsive acceleration

Direction switch on lift lever

SAFETY

Large panoramic mirror

LED lights

Rear grab handle with horn

Emergency switch

Guardian Stability System (GSS):

- Turtle mode
- Brake oil level indicator
- Unlimited ramp hold
- Low battery alarm
- Mast Lowering Interlock & Tilt Lock (ISO3691)
- Operator sensing system (OSS)
- Automatic speed control





OPTIMAL ERGONOMICS

Easy readable display

Convenience tray

Compact steering wheel

Comfort and adjustable seat

Adjustable column

EXCELLENT RELIABILITY

Rugged and durable transaxle

ODB - Oil cooled disc brakes

IP 54 rated drive & pump motors (optional)

Water and dust proof for outdoor use

GREAT SERVICEABILITY

Worldwide service network

Doosan genuine parts

Easy to access controller room and electric parts

Examine forklift program with 'Easy View'

Maximum Productivity



Excellent visibility

The precise designed overhead guard profile with angled roof bars provides a clear upward view whilst ensuring ultimate strength for safety. The excellent visibility enables you to work faster and more efficient.



The neatly arranged hydraulic hoses and chains provide clear front visibility through the wide view mast.



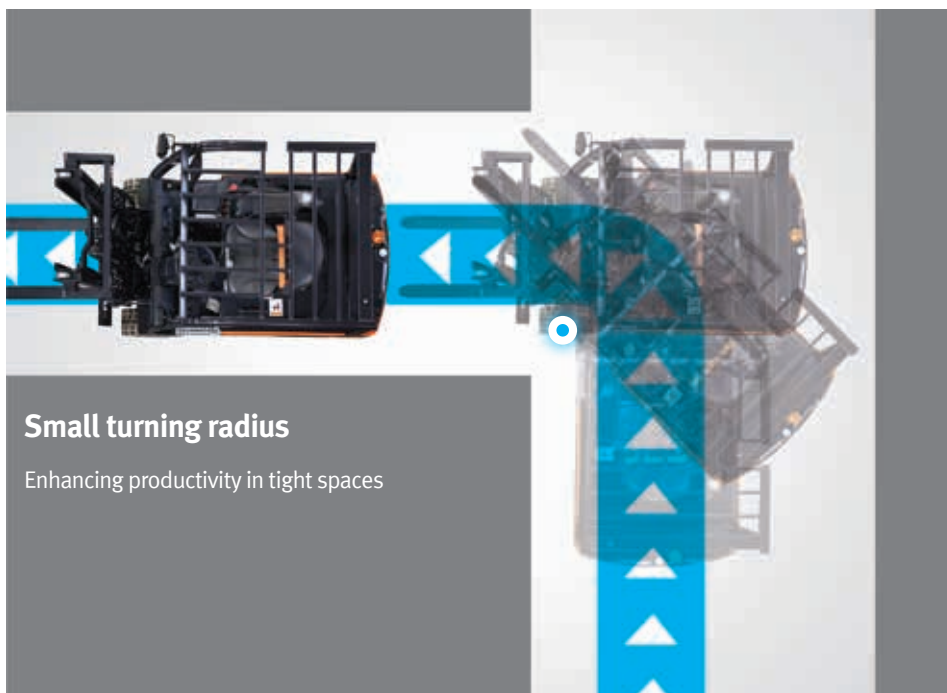
Lift lever with direction switch (optional)

The direction switch is located on the lift lever, which makes it easier for the operator to quickly change between forward and backward driving direction.



Productive acceleration & braking

The productive acceleration and braking gives the operator maximum safety and convenience. When starting the truck, the initial acceleration is reduced for safe & comfortable movement. The acceleration increases when driving at mid & high-speed for a more productive operation. An ergonomically positioned brake decreases the braking pedal effort.



Safety



“Doosan takes safety to the next level”



Turtle mode

By pushing the Turtle mode button when the truck operates in a warehouse, the truck travel speed will slow down to a predefined travel speed setting, without impacting the lifting speed. This mode ensures safely manoeuvring in delicate operating situations.



Brake oil level indicator

When the level in the brake oil reservoir is lower than minimum level, the low brake oil level indicator in the instrumental panel will flash to instruct the operator to add brake oil.



Unlimited ramp hold (Auto parking brake)

The electro-magnetic auto parking brake (EPB) prevents the forklift from rolling back if the truck is stopped on a slope. Operators can dismount the truck easily without braking.



Low battery alarm

Lifting will be disabled when the battery is discharged to 20% during operation. This function protects the battery from damage and prevents sudden loss of power due to a dead battery.



Operator Sensing System (OSS)

Whenever the operator leaves the seat, the truck travel and mast lifting functions will stop. This systems avoids any unintended forklift movements when the operator is not seated.



Mast Lowering Interlock & Tilt Lock (ISO3691)

When the operator leaves the truck unattended, the hydraulic locking system prevents unintentional lowering and tilting of the mast. It safeguards the truck, the load and the work array.



Automatic Speed Control

The angle sensing information controls the travel speed when turning sharply. It automatically reduces the travel speed to the optimal speed when cornering, reducing the risk of accidents or damage.



LED lights (optional)

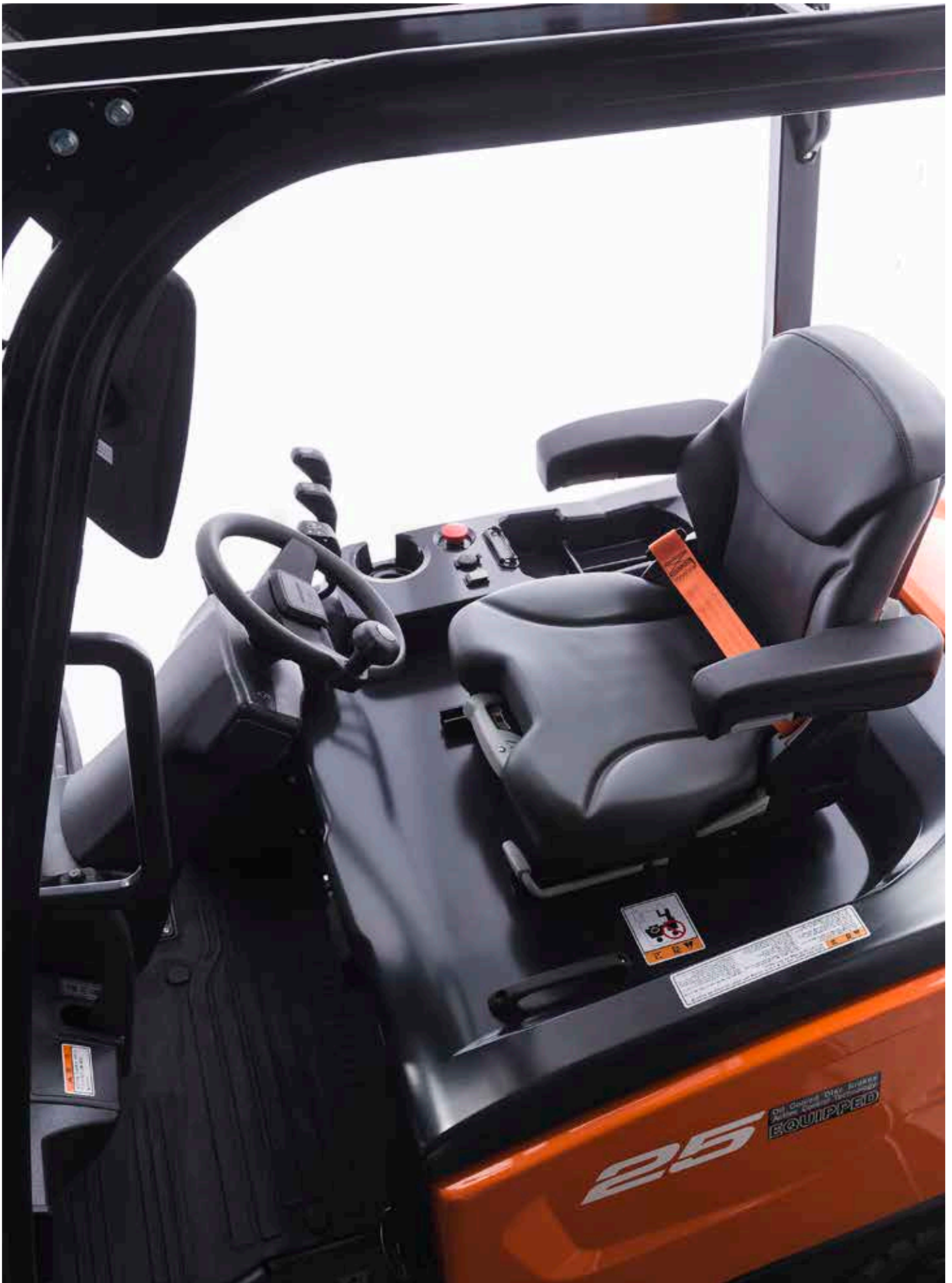
Brighter and longer lasting than traditional sealed beams or halogen lights.



Rear grab handle with horn (optional)

Enhances safety, comfort and convenience when travelling in reverse.

Safety & Optimal ergonomics



Safety



Large panoramic mirror (optional)

Provides a clear view of the rear working area for the operator, to ensure safe working conditions.



Easy and instinctive instrument panel

Operators can control the truck's performance settings during the operation, simply by using the instrument panel.



Anti slip step & Entry bar

The anti slip step and entry bar help the operator to easily mount and unmount the forklift.



Emergency switch

The emergency switch can be reached easily when operating the truck.



Adjustable column

The operator can change the stepless adjustable column to the best position that provides convenience and comfort.



Small steering wheel

The steering wheel has a compact design that reduces operator fatigue.

Ergonomics



Premium adjustable seat (Grammer seat, optional)

The comfortable suspension comfort seat is fully adjustable to accommodate every individual preference. An additional heating system is also available for improved operator convenience.



Convenience tray

The convenience tray was designed by adopting combinations of new and old favorites to give the best operator experience. Some of the features include: a large cup holder, a USB port, 12V power outlet, and a clipboard holder.



Spacious operator leg room

The thick and large rubber floor mat & the rounded hood offer comfort to the operator's compartment.

“ Infinitely **adjustable**, optimized **controllability** and exceptional **reliability** makes the new Doosan 7-Series, the operator's first choice. ”

Excellent Reliability

The 7-Series provide smooth and durable operation in various applications.

With the reliable AC controller and the optimized design, Doosan's new machine operates very efficiently.



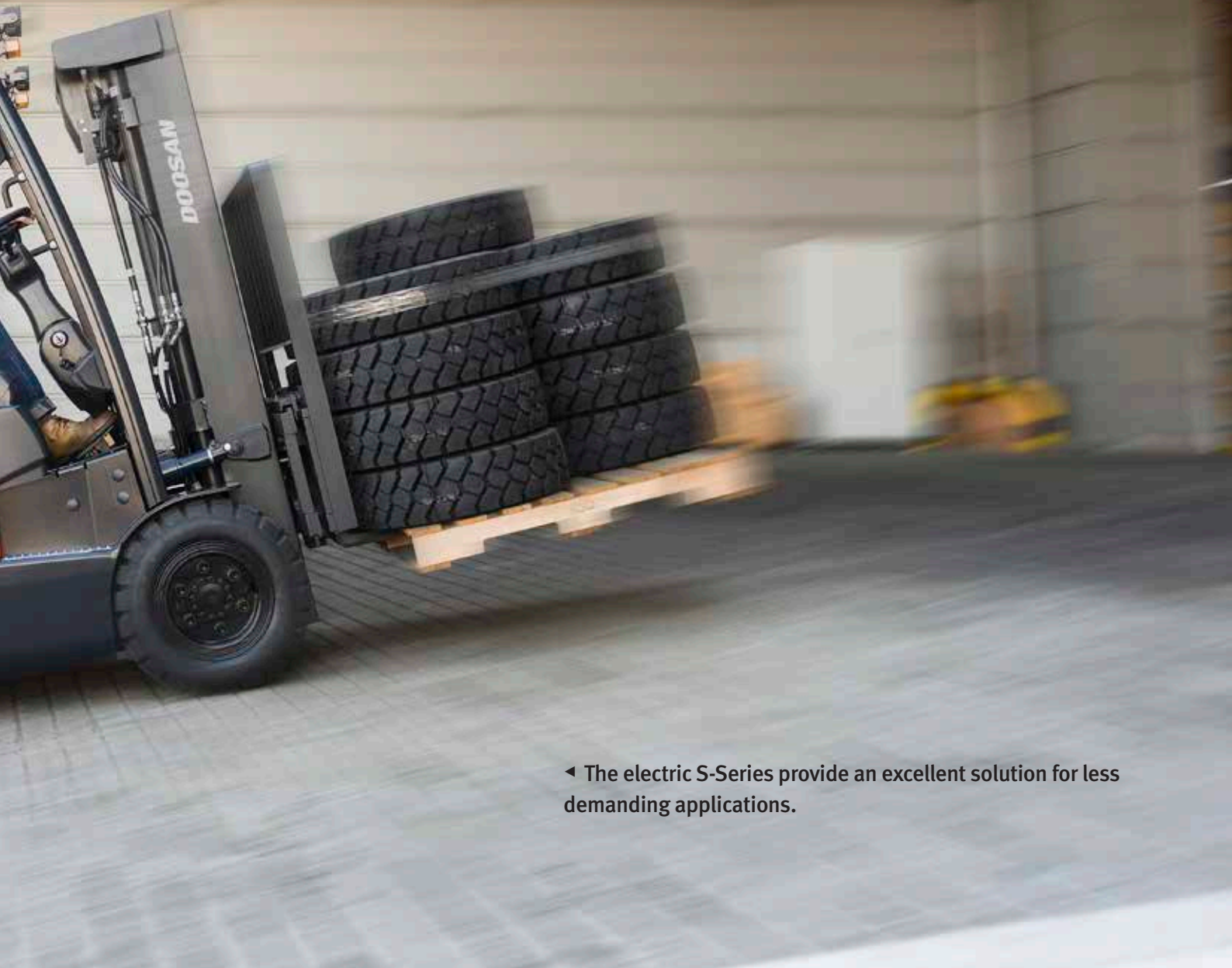
Reliable AC controller

Curtis AC controllers provide an unbeatable combination of power, performance and functionality. The IP 65 rated controller is very reliable and well proven in tough applications.



Rugged and durable transaxle

A full floating drive axle is combined with the rugged AC drive motor to form a highly efficient transaxle. The transaxle effectively transfers the power and torque of the drive motor to the final drive for both smooth and quiet operation.



◀ The electric S-Series provide an excellent solution for less demanding applications.



IP54 dust and water protection drive and pump motor (optional)

Maintenance free electric motors. The new sealed motors (option) are rated to IP54.



ODB (Oil cooled Disk Brake)

There are 3 to 5 double sliding discs per wheel. The discs are submerged in oil, keeping them cool and limiting wear. The Doosan ODB system is completely enclosed and sealed from outside contaminants protecting the inner workings of the brake system from dirt, water, shrink wrap and broken pallets.



Great Serviceability

Worldwide service network

- Head quarter
- Overseas offices and service centers



Doosan provides high-quality support, relying on its extensive dealer network. No matter where you are located, highly-skilled professionals are always ready to help you, guaranteeing maximum uptime.



Doosan genuine parts

The parts warehouse supplies high quality Doosan parts to your local dealer.



Wide open hood cover with locking type gas spring

Toolless side panel with air ventilation

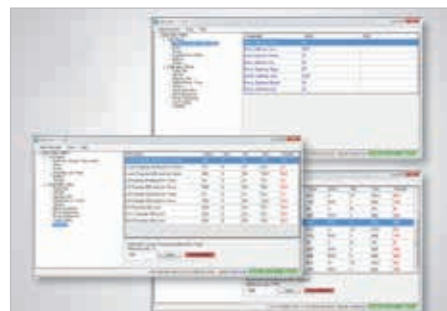


Easy to access electric parts



Easily accessible controller room

No need to open the hood to access the controller to change settings or connecting the diagnostics tool.



Easy View

You only need a laptop to adjust the forklift parameters. There is no need for any special tools.

DOOSAN IS THE PARTN



EVER YOU CAN COUNT ON



Main Specifications

MAJOR SPECIFICATION		B20S-7
Load capacity/rated load	kg	2000
Load centre distance	mm	500
Load distance, centre of drive axle to fork	mm	405
Wheelbase	mm	1400
Aisle width for pallets 1000 x 1200 crossways	mm	3652
Aisle width for pallets 800 x 1200 lengthways	mm	3452
Turning radius	mm	2040
Travel speed, loaded / unloaded	km/h	18 / 18
Lift speed, loaded / unloaded	m/s	0.44 / 0.60
Lowering speed, loaded / unloaded	m/s	0.50 / 0.46
Maximum drawbar pull, loaded / unloaded, 5 minute rating	N	15892 / 11968
Maximum gradeability, loaded / unloaded, 5 minute rating	%	28 / 32
Battery voltage/nominal capacity K5	V/Ah	48 / 715

Standard Features and Optional Extras

SAFETY & STABILITY, GUARDIAN STABILITY SYSTEM (GSS)

Guardian Stability System (GSS)	
• OSS (Operator Sensing System)	
• Neutral position for start	
• Unlimited Ramp hold	
• Automatic Speed Control	
• Low Battery Warning Alarm	
• Brake Oil & Seat Belt Indicator	
• (ISO 3691) Mast Lowering Inter-Lock & Tilt Lock	
Easy Entry Grab Bar	
Emergency stop switch	
Auto tilt leveling	
Rear grab bar with horn	
LED Lights	
Panoramic mirror	

OPERATOR COMFORT(ERGONOMICS)

Large entry step with anti-slip pattern	
Large & angled floor plate (leg room) with rubber mat	
Rounded design battery hood cover	
Easy to read instrument panel	
Adjustable tilt steering column & easy grip (φ280 size) steering wheel	
Large cup holder, usb port & 12v electric jack, clip board	
Premium seats : Grammer seat	
Steering wheel knob	
Special height overhead guards	
Mono Pedal	
Modular cabins A,B,C / Full cabin	

Standard features

Optional extras

B25S-7	B30S-7	B32S-7
2500	3000	3200
500	500	500
405	411	411
1400	1550	1550
3672	3801	3831
3472	3601	3631
2060	2190	2220
18 / 18	18 / 18	18 / 18
0.39 / 0.60	0.34 / 0.60	0.32 / 0.60
0.50 / 0.46	0.50 / 0.46	0.50 / 0.46
15598 / 11674	14224 / 10791	14126 / 10791
24 / 28	19 / 23	18 / 22
48 / 800	48 / 800	48 / 800

PRODUCTIVITY

Full AC system chassis	
High Visibility Mast (B20/25)	
Rounded design counterweight	
Hydraulic cushioned valve in secondary cylinder (FFL & FFT)	
Smooth and responsive acceleration	
Direction switch on lift lever	

RELIABILITY




IP65 Rated curtis controller	
Robust frame structure & strong structure overhead guard	
Oil-cooled disc brakes (ODB)	
IP 54 rated drive & pump motors	

SERVICEABILITY

Easy to access controller	
Wide open battery hood cover	
Toolless side cover with air ventilation	

* Remark : This list is based on factory data. Standard or optional features can vary for specific countries.



-  Production Subsidiary
-  Sales Subsidiary
-  Parts Depot Center



Doosan Industrial Vehicle Europe nv

Europark-Noord 36A
9100 Sint-Niklaas
Belgium

Tel.: +32 3 760 09 87

Fax: +32 3 760 09 89

Website: www.doosan-iv.eu

B25S-7-180524v1EN (May 2018)

Authorized Dealer